

City of Somers Point

Atlantic County, New Jersey

Exton Road Stormwater Pump Station

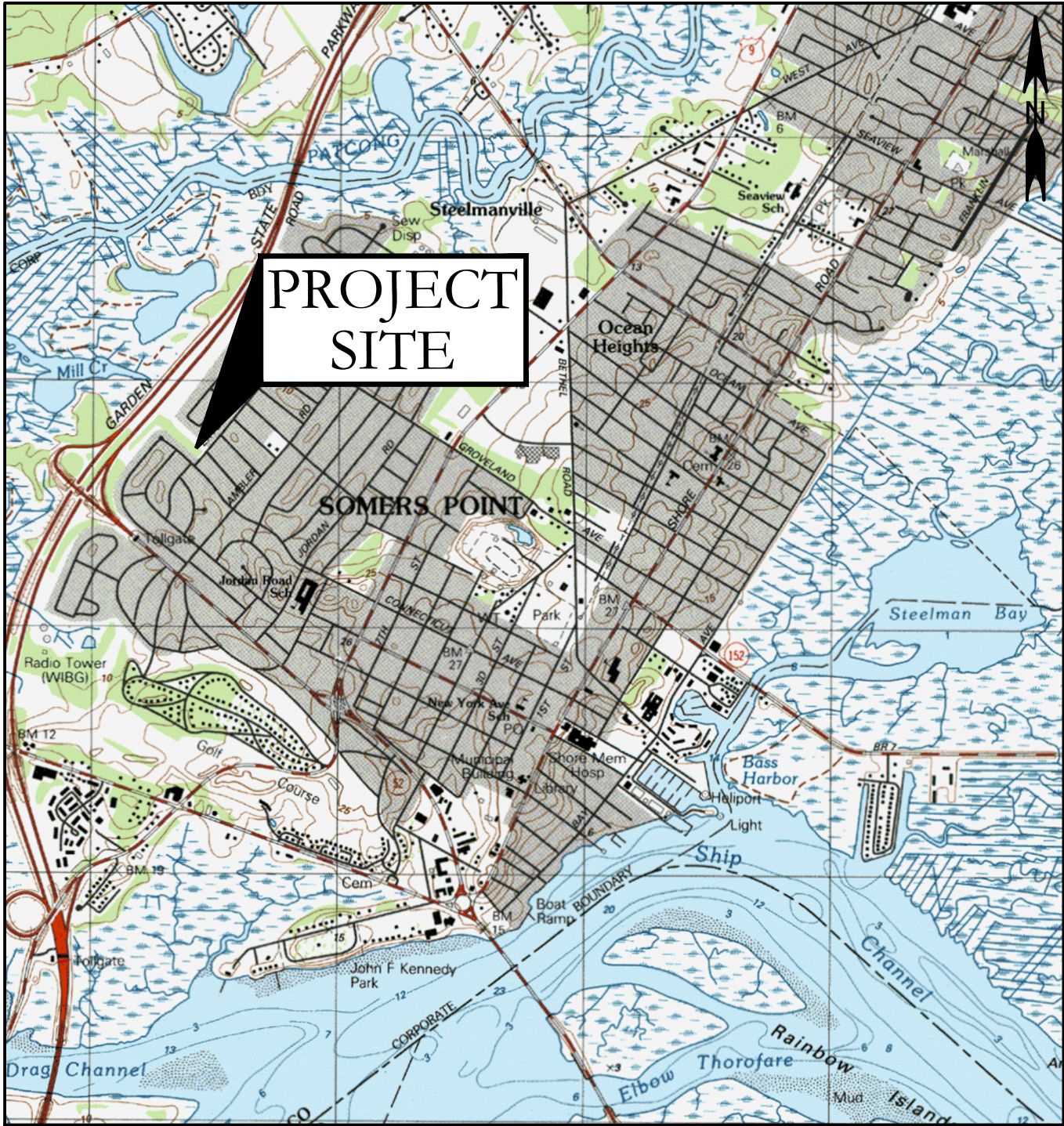
City Council
Jack Glasser, Mayor
Janice Johnston, Council President
Karen Bruno
Howard Dill
Richard DePamphilis
Joseph McCarrie
Sean McGuigan
Mike Owen

City Administrator
Jason Frost
City Clerk
Lucy Samuelson, RMC

Index of Drawings	
Sheet	Description
1	Cover Sheet
2	Exton Road Pump Station Plan
3	Construction Details

Utilities Information	
South Jersey Gas	1-800-582-7060
Atlantic City Electric	1-800-833-7476
Verizon Telephone	1-800-837-4966
Comcast Cable	1-800-934-6489
New Jersey American Water Co.	1-800-652-6987
Atlantic County MUA	1-609-272-6950
Somers Point Sanitary Sewer	1-609-927-2286
Utility Markout	1-800-272-1000

Contract No. 113
September 2022



USGS Quadrangle "Ocean City, NJ"

Location Map
Scale: 1" = 2000'



Kates Schneider Engineering, LLC
Engineers • Surveyors • Planners

215 Route 9 South, Box #10
Marmora, New Jersey 08223
(609) 365-1747

ESTIMATE OF QUANTITIES

ITEM NO.	DESCRIPTION	UNIT	NJDOT SECTION #	BID QUANTITY	AS-BUILT QUANTITY
1	CLEARING SITE & TRAFFIC CONTROL	LUMP SUM	201	1	
2	ROADWAY EXCAVATION, UNCLASSIFIED, IF & WHERE DIRECTED	C.Y.	202	5	
3	HOT MIX ASPHALT SURFACE COURSE, MIX 9.5M64, 2" THICK	TON	401	1	
4	INLETS, TYPE "E" (DOUBLE)	UNIT	602	1	
5	36" HIGH DENSITY POLYETHYLENE CULVERT PIPE	L.F.	601	106	
6	36" DUCTILE IRON CULVERT PIPE, CLASS 52	L.F.	601	152	
7	WAGATE FLAP VALVE, 36"	UNIT	613	2	
8	RIP RAP, D50- 6"-8"	S.Y.	0	6	
9	EXTON ROAD PUMP STATION	LS	0	1	
10	ELECTRIC CONTROL ROOM ENCLOSURE	LS	0	1	
11	VINYL PRIVACY FENCE, 8-FOOT-HIGH	L.F.	0	125	
12	SIGNS	S.F.	612	0	
13	TOPSOILING, 4" THICK	S.Y.	804	60	
14	FERTILIZING & SEEDING	S.Y.	806	60	
A1	150KW NATURAL GAS GENERATOR	LS	0	1	

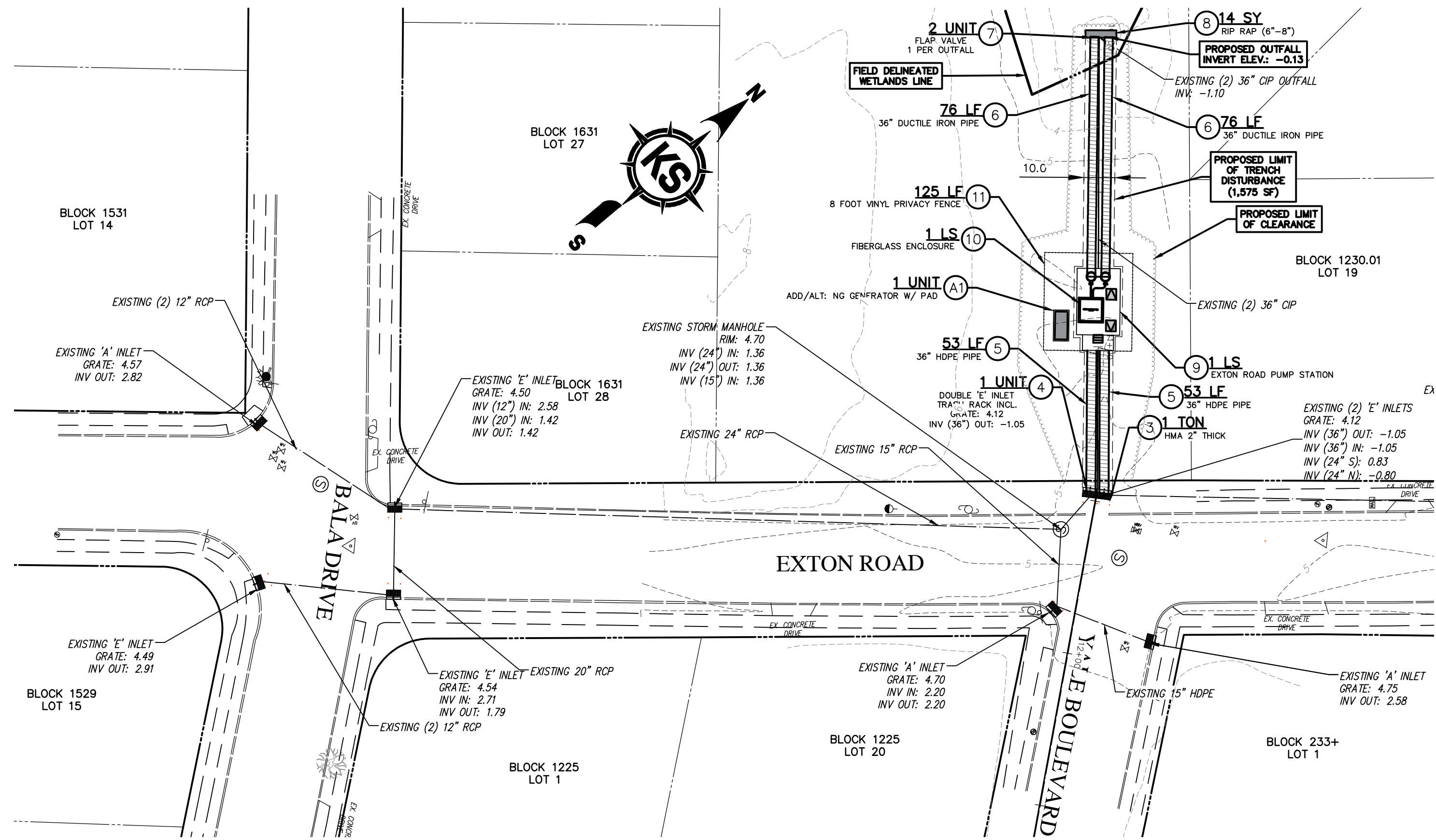
General Notes

- The locations of all existing utilities shown on this plan are approximate. The Contractor is responsible for verifying the location and depths of all existing subsurface utilities prior to the start of construction. It is also the Contractor's responsibility to obtain a mark-out of all existing utilities by calling 1-800-272-1000 prior to any land disturbance.
- Prior to the start of construction the Contractor shall verify all topographic information for the entire site.
- The Contractor shall be completely responsible for ensuring that all materials, methods and details for the construction of the improvements shall conform to the applicable statutes, regulations, ordinances and standards over the governmental bodies having jurisdiction over such work. This responsibility shall include, but not be limited to the following:
 - Conformity with the approved plans as well as standards and specifications of the municipality.
 - Correction of all defects in the work, no matter what the cause, until the date of acceptance and thereafter for the period of any guarantee which runs beyond the date of acceptance.
 - Solution of any problem, unforeseen at the time of the approval of the plans, which may or do impair the integrity of any improvements, including problems such as high ground water, unstable soil, clay under basin bottom, etc.
- The Contractor shall procure **ALL** required permits, licenses, inspections, pay all charges and fees and give notices necessary for and incidental to the due and lawful prosecution of the work.
- The Contractor shall be responsible for all clearing, grubbing, restoring, paving, topsoiling, fertilizing and seeding all areas disturbed by his activities, as directed by the Engineer or as shown on the plans.
- Efforts shall be made by the Contractor to retain existing trees, vegetation and natural characteristics of the site when possible.
- All soil erosion and sediment control measures shall be in accordance with the details herein and the "Standards for Soil Erosion and Sediment Control in New Jersey".
- No material shall be placed, nor any disturbance permitted beyond the project property line or right-of-way without the written permission of the property owners directly involved. Evidence of any such agreement must be submitted to the Engineer.
- The Contractor is responsible for providing traffic control, as directed by the Engineer in accordance with the MUTCD standards and NJDOT Specifications for Road and Bridge Construction 2019.
- Construction details are included with this set of plans. Any required detail not included with this set shall come from the NJDOT's "Standard Roadway Construction Details" (English Units), issued 2016, and Standard Electrical Details, issued 2007, and as amended. If there is a conflict between NJDOT Standard Detail and the Details included in this set of plans, the Details included herewith shall govern.
- The Contractor is advised to use the Site Benchmarks as listed and to not use ground elevations from the profiles or cross-sections.
- No development, including clearing and land disturbance, is permitted in wetlands or wetland buffers.
- All material left over from excavation and stripping shall remain on site and stock piled in a location directed by the City Engineer.

Gregory K. Schneider
Professional Engineer & Land Surveyor
New Jersey License No. 42577

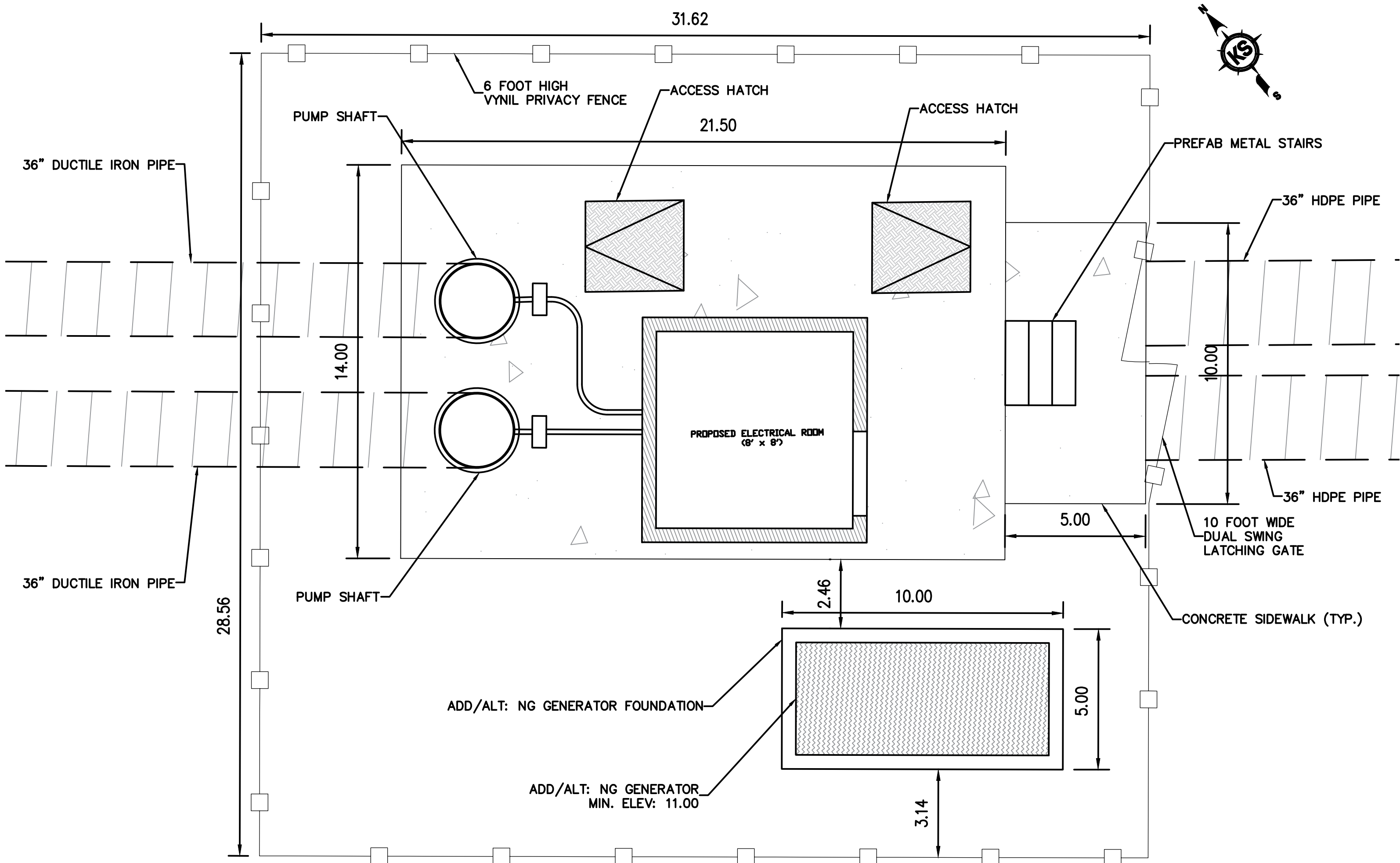
Gregory K. Schneider

DATE: 8/26/2022



Exton Road Pump Station Plan

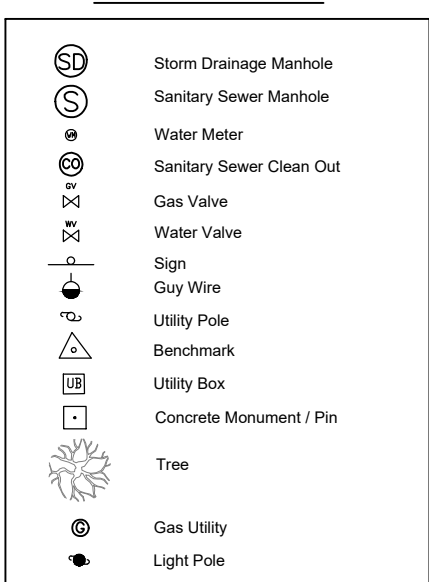
SCALE: 1" = 30'



Exton Road Pump Station Plan

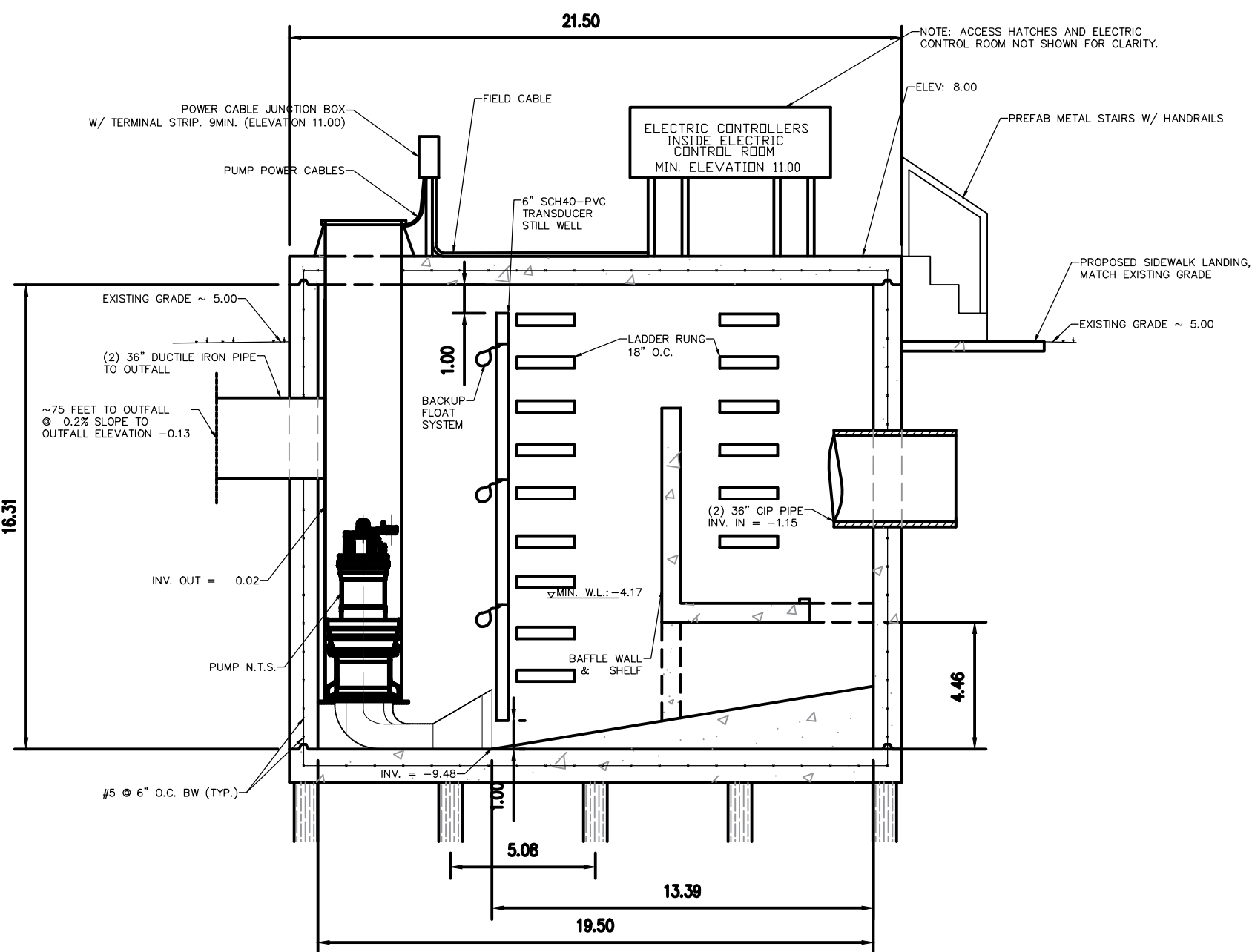
SCALE: 1" = 3'

SYMBOL LEGEND



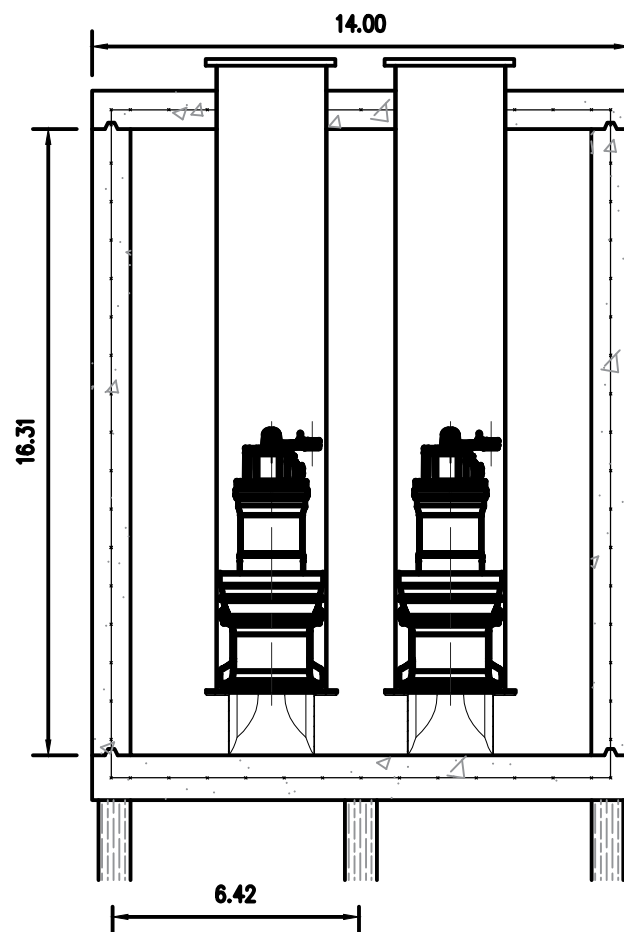
ESTIMATE OF QUANTITIES

ITEM NO.	DESCRIPTION	UNIT	NJDOT SECTION #	BID QUANTITY	AS-BUILT QUANTITY	SHEET 2 QUANTITY
1	CLEARING SITE & TRAFFIC CONTROL	LUMP SUM	201	1		0
2	ROADWAY EXCAVATION, UNCLASSIFIED, IF & WHERE DIRECTED	C.Y.	202	5		0
3	HOT MIX ASPHALT SURFACE COURSE, MIX 9.5M64, 2" THICK	TON	401	1		1
4	INLETS, TYPE "E" (DOUBLE)	UNIT	602	1		1
5	36" HIGH DENSITY POLYETHYLENE CULVERT PIPE	L.F.	601	106		106
6	36" DUCTILE IRON CULVERT PIPE, CLASS S2	L.F.	601	152		152
7	WAGATE FLAP VALVE, 36"	UNIT	613	2		2
8	RIP RAP, D50-6"-8"	S.Y.	0	6		6
9	EXTON ROAD PUMP STATION	LS	0	1		1
10	ELECTRIC CONTROL ROOM ENCLOSURE	LS	0	1		1
11	VINYL PRIVACY FENCE, 8-FOOT-HIGH	L.F.	0	125		125
12	SIGNS	S.F.	612	0		0
13	TOPSOILING, 4" THICK	S.Y.	804	60		0
14	FERTILIZING & SEEDING	S.Y.	806	60		0
A1	150KW NATURAL GAS GENERATOR	LS	0	1		1



Exton Road Pump Station Section Views

SCALE: 1" = 5'



Pile Foundation Location Plan

SCALE: 1" = 5'

Gregory K. Schneider
Professional Engineer & Land Surveyor
New Jersey License No. 42577

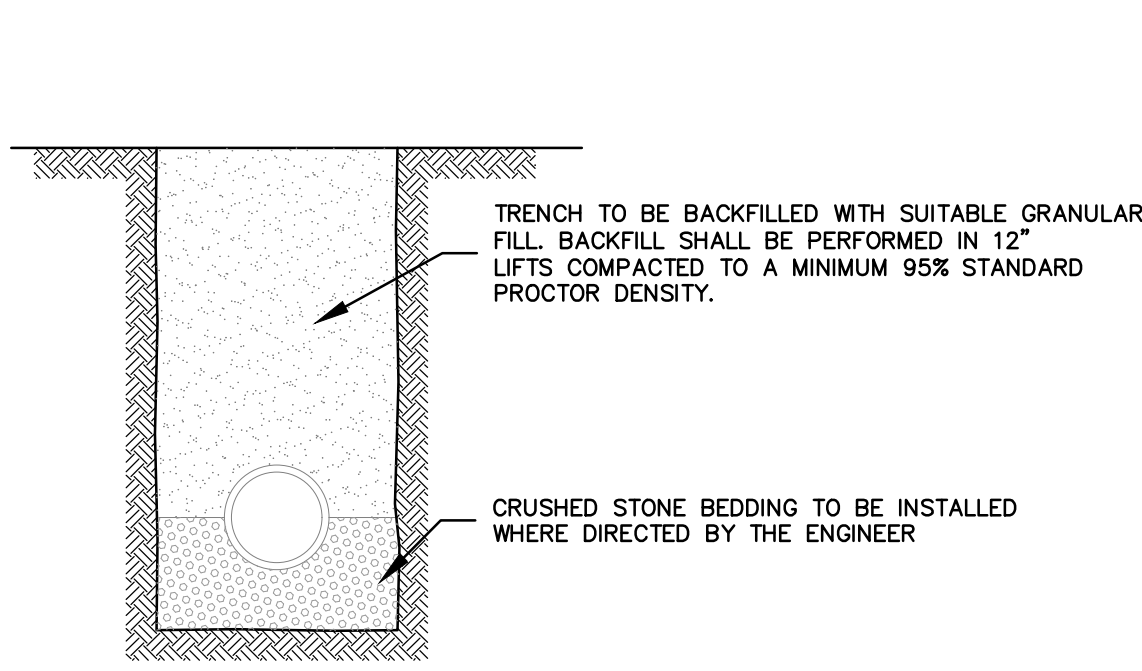
Kates Schneider Engineering, LLC
Engineers - Surveyors - Planners
State Board of Professional Engineers & Land Surveyors
Certificate of Authorization No. 2404 2022-20

215 South Shore Road
Marmora, New Jersey 08223
Phone: (609) 365-1747
Fax: (609) 365-2634
info@ksecivil.com
www.ksecivil.com

City of Somers Point
Atlantic County, New Jersey
Exton Road
Pump Station Plan

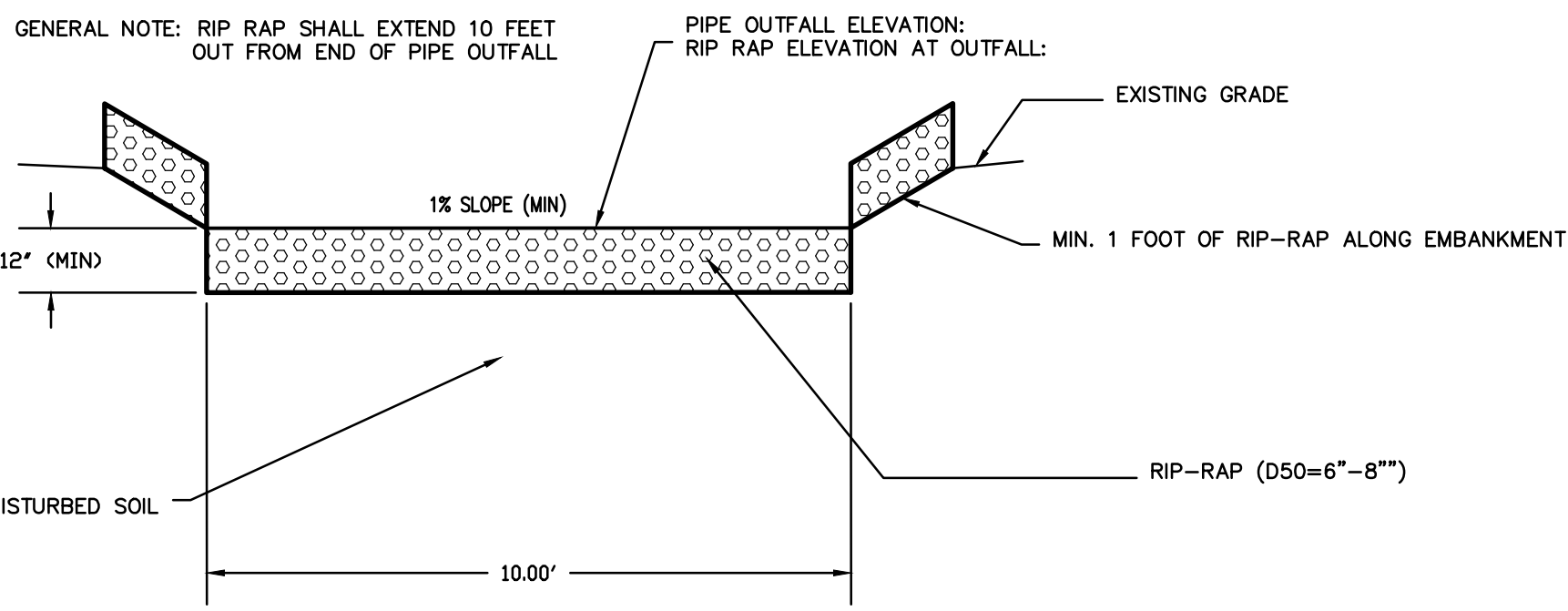
Job No. 1001.21
Sheet 2
B/O 2
Total 3

Date 8/26/2022
Approved GKS
Checked Pdk
Drawn JAI
Designed JAI



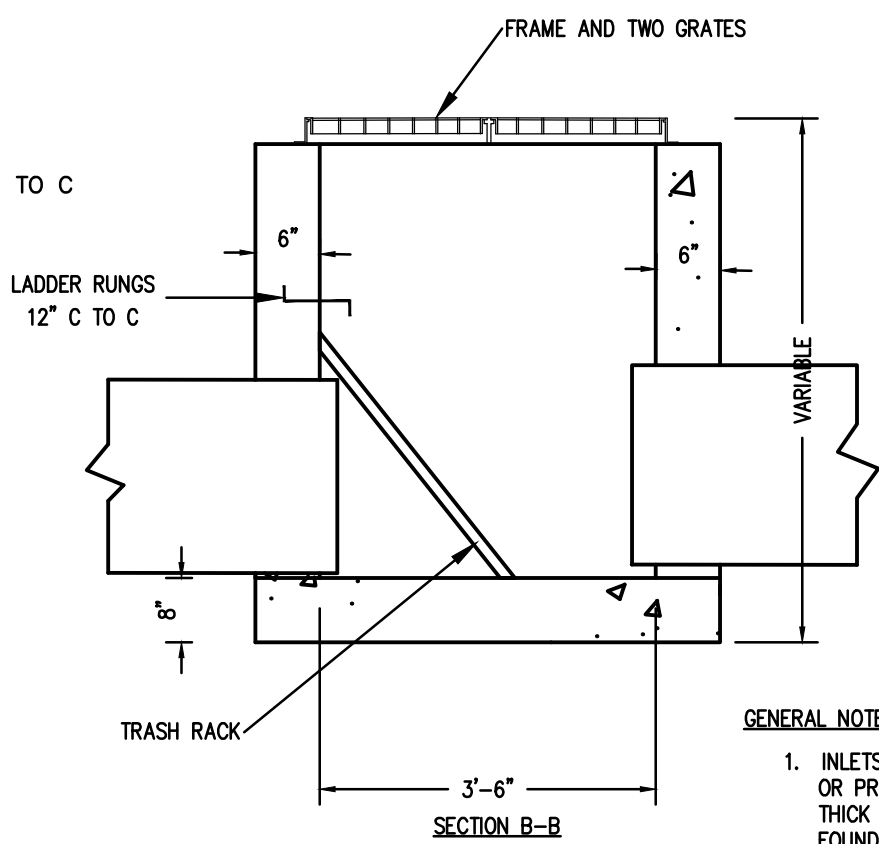
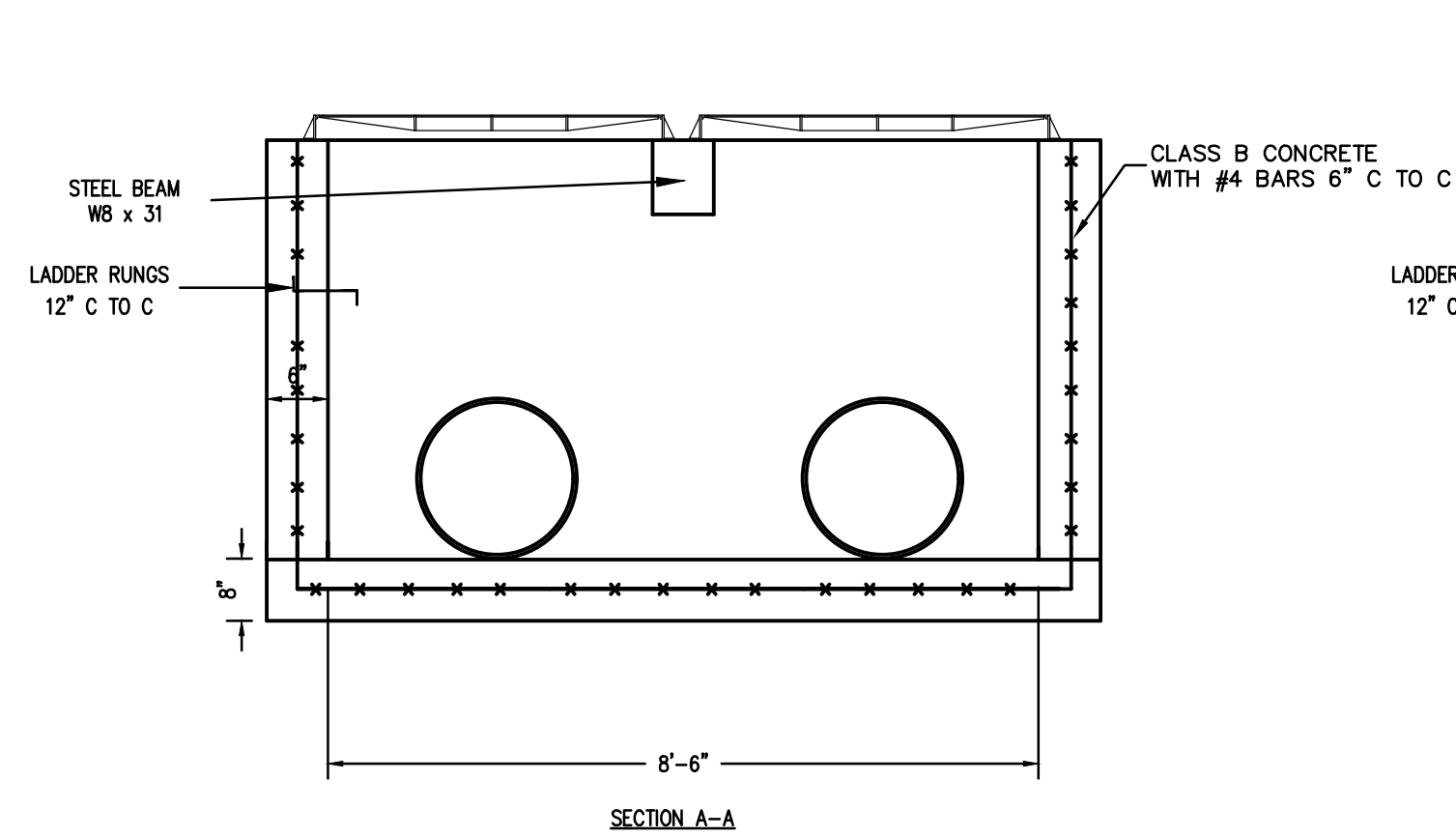
PIPE BEDDING DETAIL

NOT TO SCALE



RIP-RAP DETAIL

NOT TO SCALE

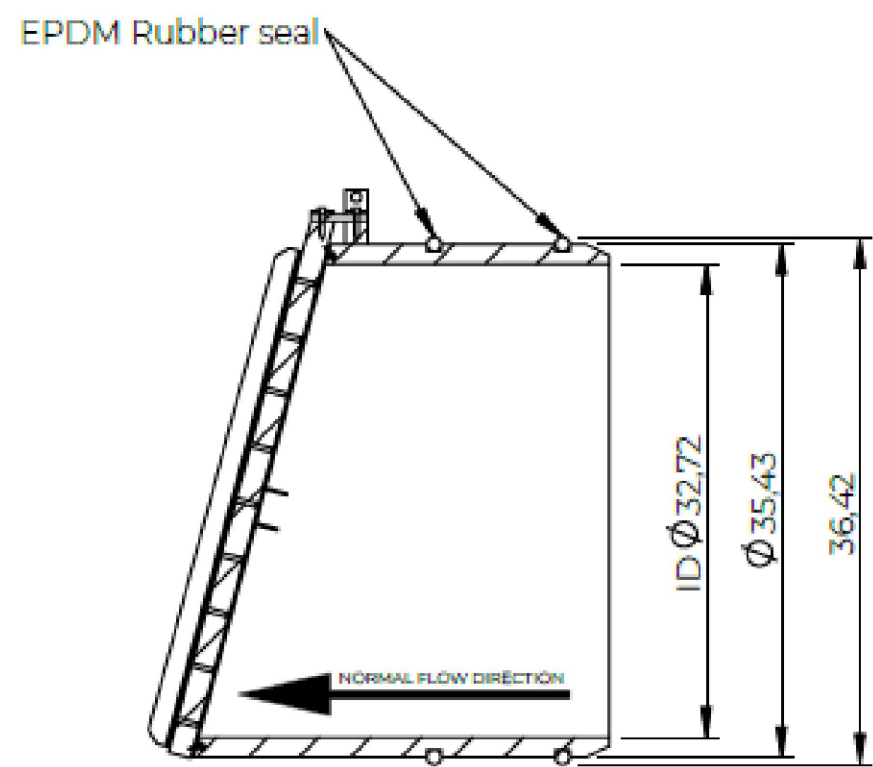
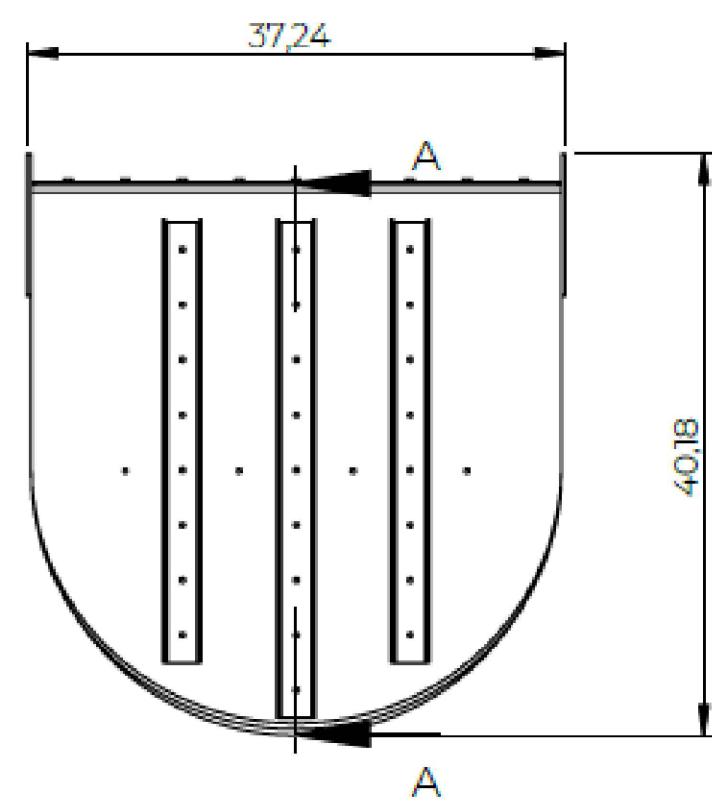


GENERAL NOTES

1. INLETS MAY BE CONSTRUCTED OF BRICK, CONCRETE, CONCRETE BLOCK OR PRECAST CONCRETE. WALLS SHALL BE 6" THICK IF BRICK AND 6" THICK IF CONCRETE, CONCRETE BLOCK OR PRECAST CONCRETE. INLET FOUNDATION SHALL BE CLASS "C" CONCRETE.
2. A LEACHING BASIN 18" X 18" X 18" DEEP OF 3/4" WASHED STONE OR APPROVED FIELD STONE SHALL BE CONSTRUCTED IN EACH INLET.
3. ALL CONSTRUCTION SHALL BE IN ACCORDANCE WITH THE REQUIREMENTS OF THE STANDARD SPECIFICATIONS.

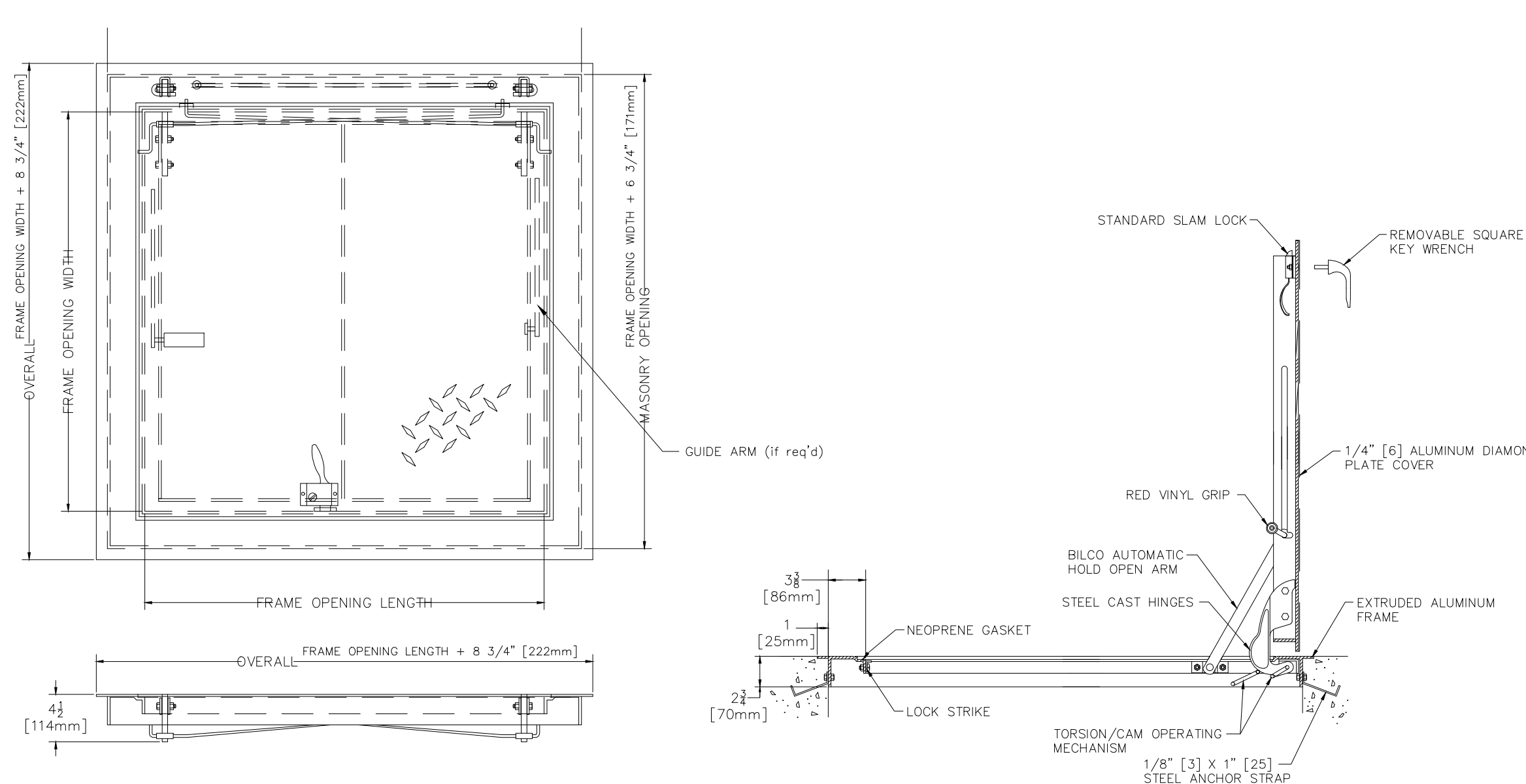
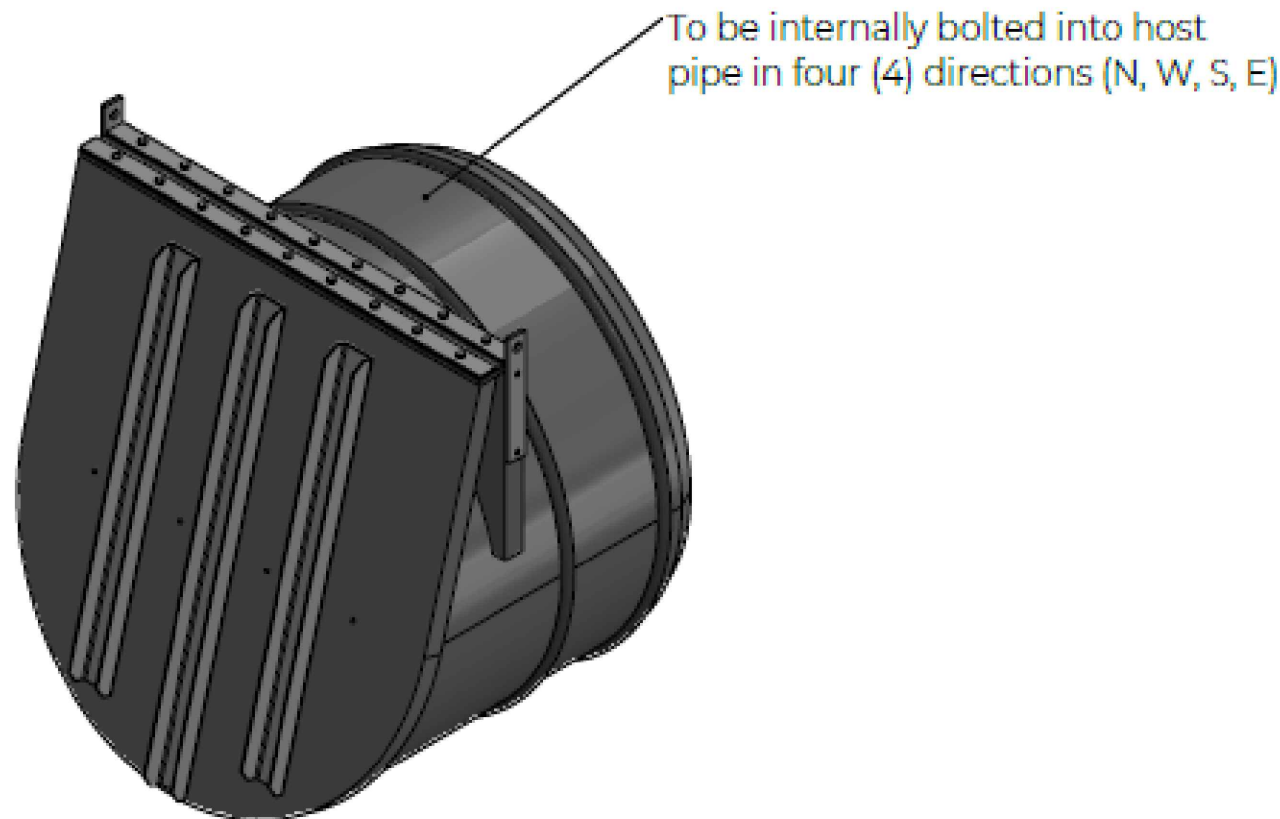
INLET TYPE DOUBLE 'E'

NOT TO SCALE



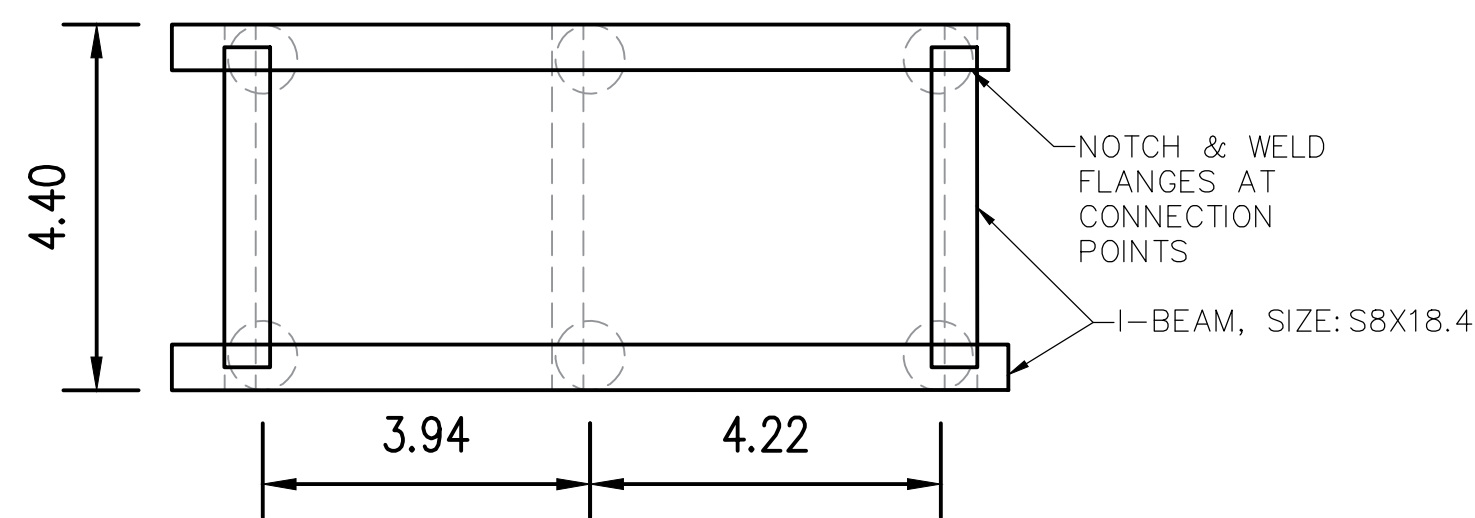
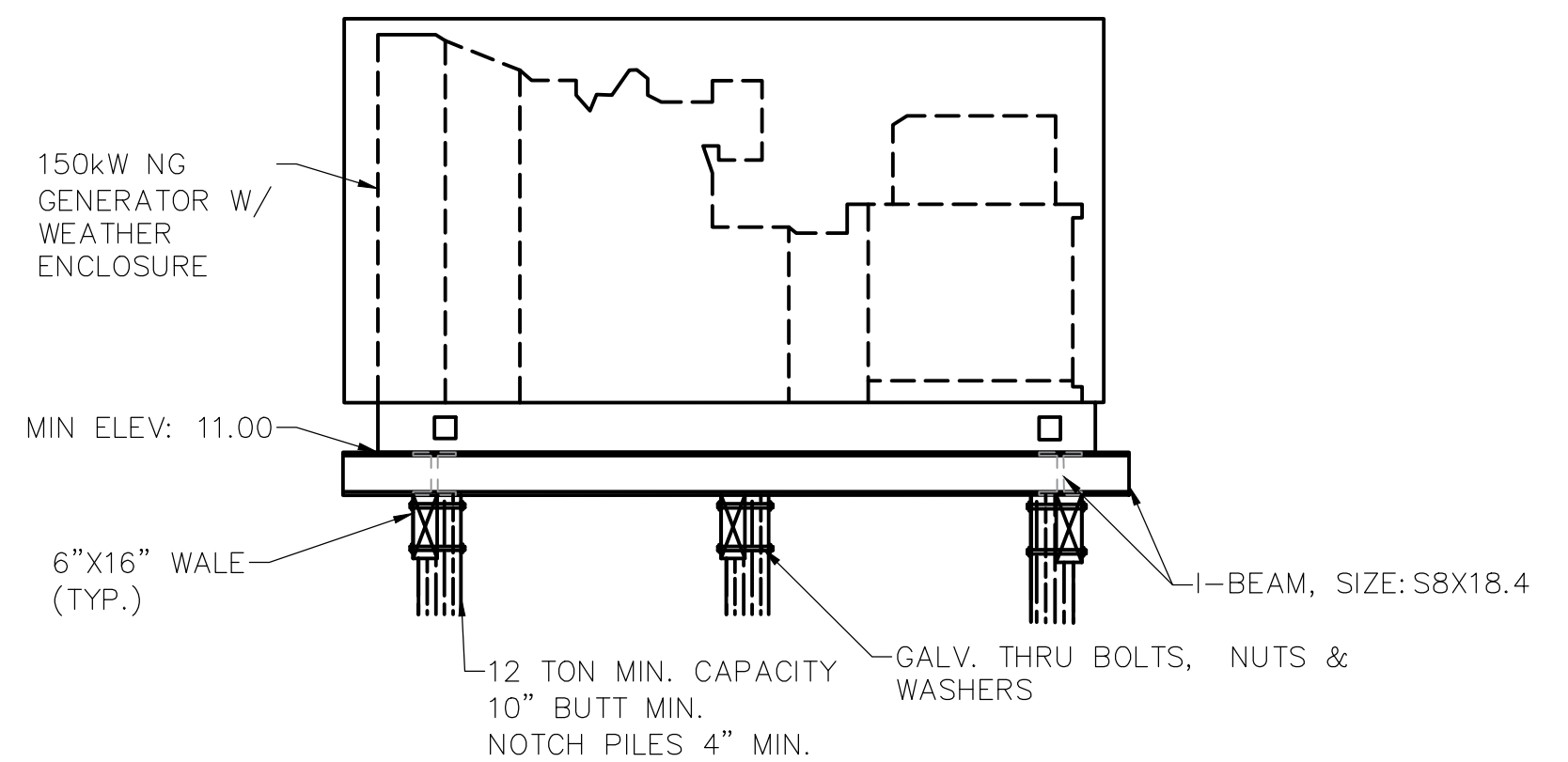
FLAP VALVE - WAGATE KVI NPS 36"

NOT TO SCALE



BILCO TYPE K ACCESS HATCH

NOT TO SCALE



NG GENERATOR FOUNDATION DETAIL

NOT TO SCALE

VINYL FENCE DETAIL

Aluminum Channel In Each Rail

VINYL FENCE, 8 FOOT HIGH

NOT TO SCALE



SIGNAGE

NOT TO SCALE

City of Somers Point Atlantic County, New Jersey Exton Road Pump Station Details		Job No. 1001.21		Sheet 3	
		B/O 3		Total 3	
Gregory K. Schneider Professional Engineer & Land Surveyor New Jersey License No. 42577		Date 8/26/2022		Approved GKS	
		Checked PdK		Drawn JAI	
Kates Schneider Engineering, LLC Engineers - Surveyors - Planners State Board of Professional Engineers & Land Surveyors Certificate of Authorization No. 24CA 283203		Designed JAI		8/26/2022	